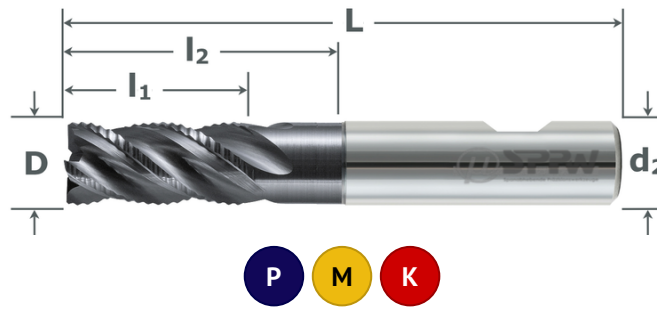


757 546

HPC-Schruppfräser VHM+X.Cut Ungleiche Teilung - Lang Carbide HPC Roughing End Mills+X.Cut Unequal Helix - Long



- Schrupp- und Schlichtbearbeitung - NRf-Profil
- Lange Ausführung
- Mit ungleicher Teilung 35°/38°
- Oberfläche X.Cut beschichtet
- Roughing and finishing operations - NRf-profile
- Long version
- Unequal helix 35°/38°
- With X.Cut coating



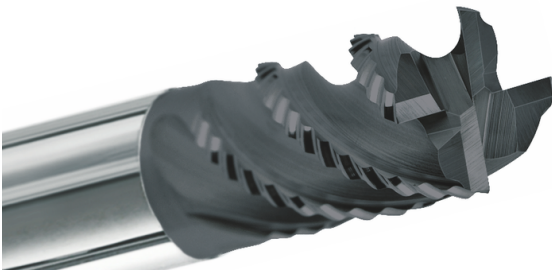
VHM	X Cut
HPC 35 38	z:4
DIN 6535HB	L lang
NRf Profil	

757546 - lang | long series

ØD h10	Ød2 h6	L	l1	l2	z	Art. No.	Stk/pce Euro	ØD h10	Ød2 h6	L	l1	l2	z	Art. No.	Stk/pce Euro
3	6	70	8	15	4	7575460300	44,60	10	10	94	22	50	4	7575461000	96,40
4	6	70	11	20	4	7575460400	44,60	12	12	109	26	64	4	7575461200	115,30
5	6	70	13	25	4	7575460500	51,00	16	16	132	32	80	4	7575461600	217,40
6	6	70	13	30	4	7575460600	57,80	20	20	154	38	100	4	7575462000	284,00
8	8	80	19	40	4	7575460800	70,60								

— INFO —

— INFO —



- Ultra-Feinstkorn-Hartmetall
- TiAlCrN-Beschichtung
- Ungleiche Teilung 35°/38°
- Feine NR-Kordelverzahnung
- 45° Schutzfase an der Schneide
- Ultra-fine grain carbide
- TiAlCrN coating
- Unequal Helix 35°/38°
- Medium pitch roughing profile
- 45° protection chamfer

J